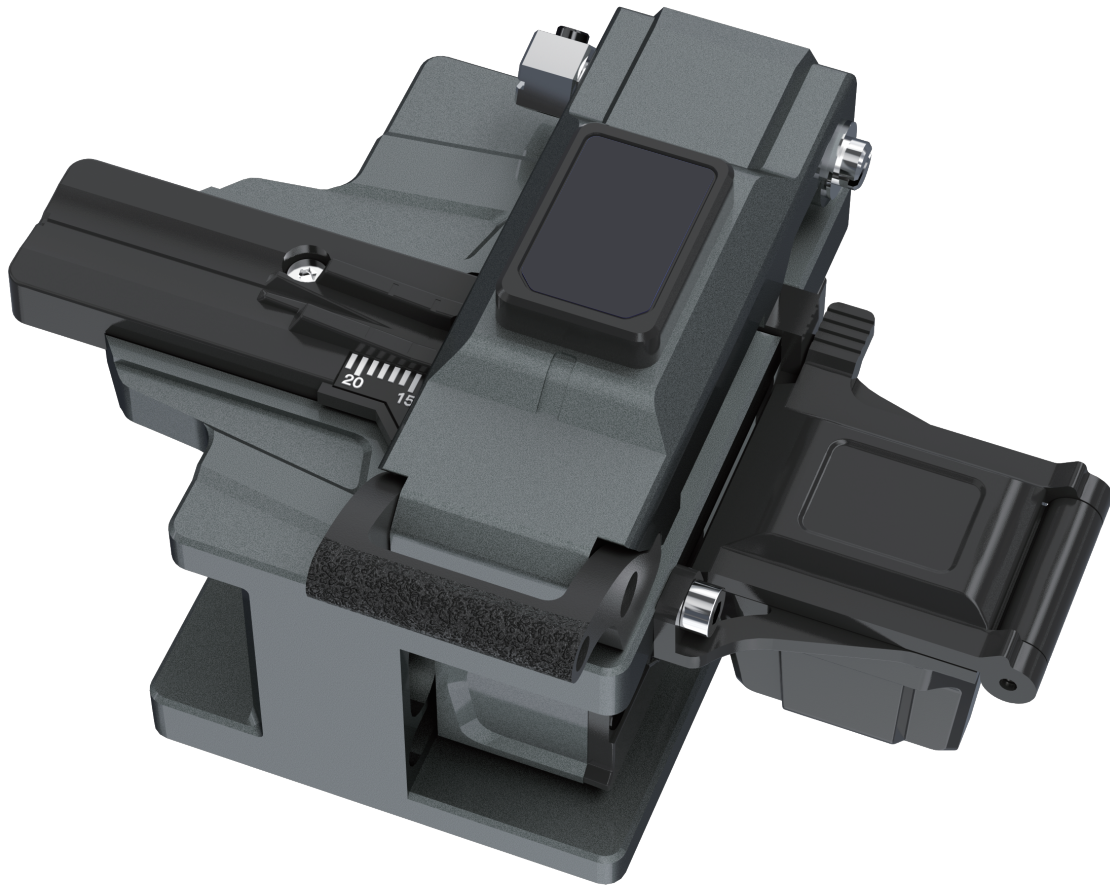


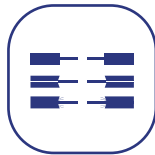
Hand Held High Precision Fiber Cleaver



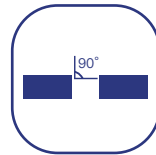
Hand held
design



48000
Blade life



Double
Fiber Holders



$\leq 0.5^\circ$
Cleaved angle



Fiber
Offcut Bin



Characteristics Description

Hand held design, Small, compact size and light weight

Typical Cleave Angel 0.5°

Applicable to 250 μ m, 900 μ m, 3.0mm fiber cable and flat cable

Double Fiber Holders

Blade life 48,000 cleaves

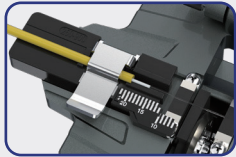
Large capacity waste fiber bin, reduce pollution and scratches



Main Features



Silicone pressure pad can effectively hold down the fiber.



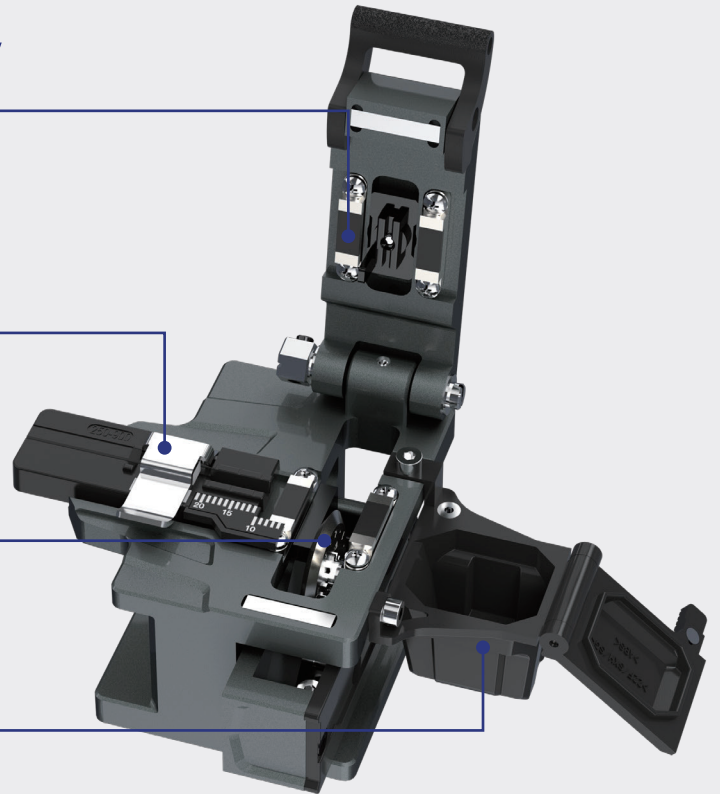
Applicable to 250 μ m, 900 μ m, 3.0mm fiber cable and flat cable



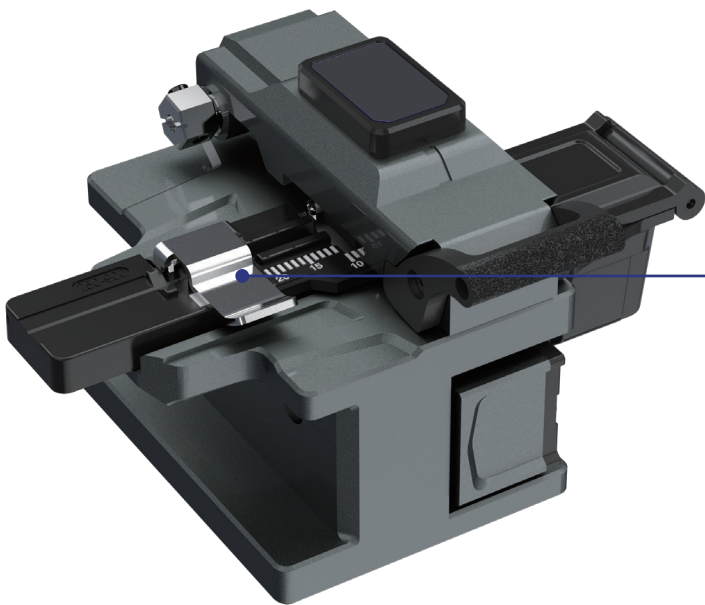
Tungsten steel refined blade
Wear resistance, high hardness, corrosion resistance.



Large capacity waste fiber bin



Double Fiber Holders

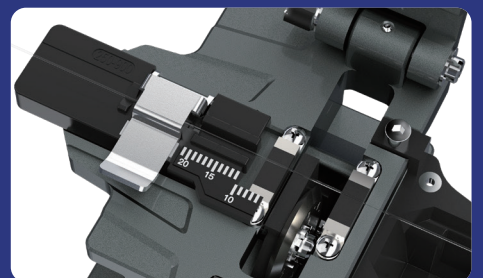
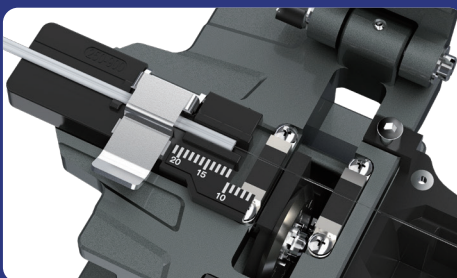
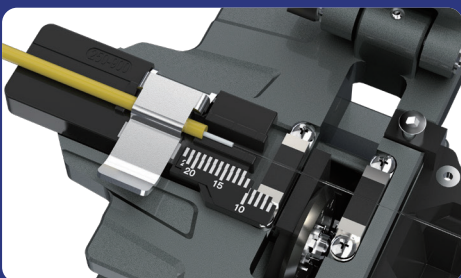


Beginner use, easy and efficient



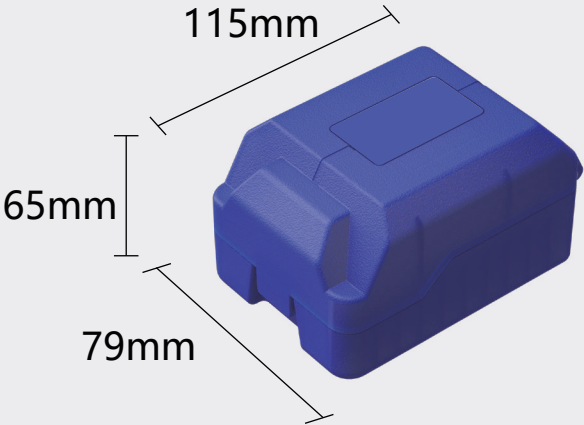
Veteran use, fast and convenient

Applicable to 250 μ m, 900 μ m, 3.0mm fiber cable and flat cable



Special carrying case

The card slot in the box is designed to effectively protect the cleaver body from damage.



Product Specifications

Fiber Material	Silica glass
Cladding Diameter	125 μ m
Cleaved Length	Single fiber: 8~20mm / Ribbon fiber: 10mm
Applicable Fiber Cable	Single fiber: 250 μ m, 900 μ m, 3.0mm; Fiber cable and flat cable Ribbon fiber: 2 to 12 ribbon fiber cable
Typical Cleaved Angle	Less than 0.5° ★①
Typical Blade Life	Total 48,000 fiber cleaves (replaceable) ★②
Off-cut Collector	Pre-fitted
Type of Offcut Bin	Manual
Auto Return	Pre-fitted
Fiber Holder	Double Fiber Holders
Dimension	55W *55D*50H(mm)
Weight	235g

★① Cleaved angel may vary depending on the operating environment.
★② Blade life is not guaranteed. It may vary depending on the operating environment.



Product Display

